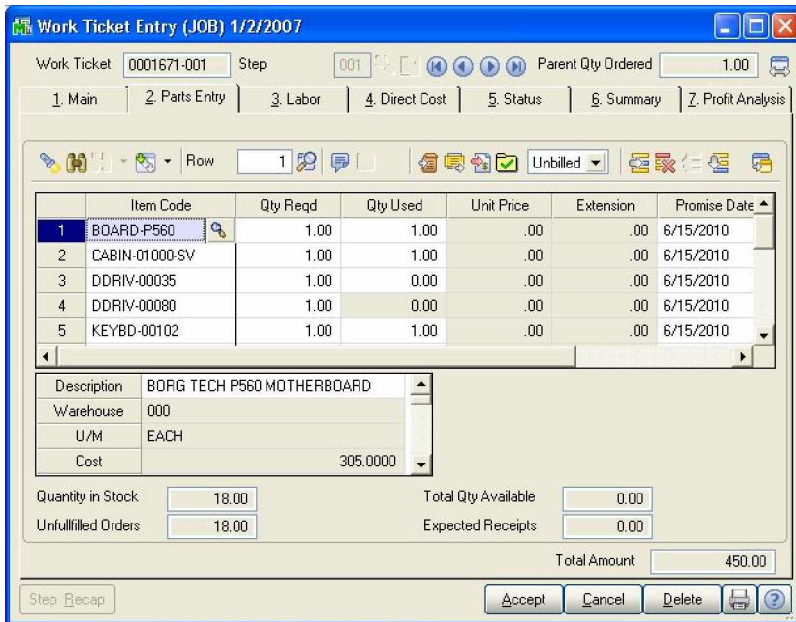


# JobOps 4.10 Enhancements

## Return Order to Job Management

### FACT SHEET



#### Work Ticket Entry

- The Activity Code field is now available on default step 000 for work tickets whose work ticket class allows steps, as well as for item-based work tickets.
- The Labor, Direct Cost and Status information screens now have resizable and sortable columns

#### Work Ticket Entry - Parts Entry User Interface

- The Parts Entry function in work ticket entry has been incorporated with the new Sage MAS 90 and Sage MAS 200 business framework
- Dual grids for line item entry
- Customizable column widths
- Drag 'n drop field columns with ability to sort and hide columns
- Undo saved changes
- Resizable window
- Any personalization made to the grids are saved to the current user logon
- Ability to export parts list to Excel

*Work Ticket enhancements pave the way for greater flexibility and job productivity.*

#### Work Ticket Entry - Parts Entry Enhancements

- Item inquiry zoom for inventory items
- Bill of Materials search
- Alias Item search and customer Last Purchase History lookup
- For inventory items, Item Status, Price Lookup, Alternate Warehouse and Alternate Item capabilities
- Comment field available for each part
- The common Miscellaneous Item file is supported for entering miscellaneous item work ticket parts
- New Parts Listing lookup allows a selected step's parts to be resorted and optionally exported to Excel (this replaces the previous *Part Sort Order* option in Work Ticket Class Maintenance)
- Separate *Charge* and *Print* check box fields have been incorporated, allowing a non-chargeable item to be printed on the sales order and invoice forms (previously the Charge and Print checkboxes were a single field)
- A *Total Amount* field has been added which totals the extended amounts of all chargeable work ticket component.

#### Work Ticket Billing Selection

- Work Ticket Billing Selection in Shipping Data Entry and Invoice Data Entry has been enhanced to allow work tickets to be skipped from shipping or invoicing.
- A work ticket that is not shipped/invoiced is not processed during the sales journal update and no costs are relieved from the work ticket
- The Work Ticket Billing Selection function has been enhanced with buttons to set all work tickets for the order to be billed complete, partially billed or skipped

#### Work Ticket Printing

- After quick printing a work ticket from work ticket entry, focus is returned to the sales order which contains the work ticket as previously focus was returned to an empty sales order entry screen
- The non-graphical work ticket form is no longer supported and Work tickets can now only be printed using Crystal Reports

*This release is available for Sage MAS 90 or Sage MAS 200 ERP Version 4.10 with Service Pack 1 and Service Update 6*

# JobOps 4.1 Enhancements

## FEATURES

*JobOps is a suite of Job Management modules for Sage MAS 90 and Sage MAS 200 ERP. JobOps is suited for small and mid-sized companies (\$7-50 million), in the manufacturing, installation and service/field repair areas.*



### Compatibility with ACT! Link for ACT! by Sage 2006 Version 8.0

The ACT! Link for version 4.10 can be installed at any time when JobOps is already installed. JobOps and the ACT! Link no longer have any like Sage programs modified. Sales orders with work tickets can be created through the Sales Order or Sales Quote Entry MAS 90 task within ACT!



### JobOps Version 4.10 Enhancements

#### Time Tracker Cross Midnight Automated Logins

- Time Tracker's Single and Multi-Employee Entry modes have been enhanced to accommodate shifts that cross midnight so that the time entry's transaction date may get automatically set to the current operating system date when a new login occurs for the first time in the new date.

#### Periodic Labor Register/Update

- Time Tracker's Periodic Labor Register and Update functions can now be processed when there are invoices in sales order's invoice data entry that are all non-work ticket related.

#### Scheduling

- The Capable to Promise function is now accessible from sales order entry when selected on a parent item's Promise Date field, by selecting the Capable to Promise Information button from the Grid Button Bar.

#### Component Exception Manager

- The Maximum Stock Level item warehouse Reorder Method is now considered in the calculation of a demand item's Actual Quantity to Buy. Additionally, the item's Maximum Stock Level is displayed in the Inventory Drilldown of a Component Exception Manager demand item.

#### Sales Order Quote History

- Work Tickets and Sales Orders created from Service Ticket Entry and Preventive Maintenance Generation now update to the Sales Order/Quote History files. Additionally, changes made to a service ticket affecting sales order lines also update the Sales Order/Quote History files.

#### Shipping Data Entry

- Work tickets whose work ticket class is assigned the Percent Complete cost recognition method may now be shipped through Shipping Data Entry. Additionally, work tickets whose work ticket class is assigned the Technician Scheduling Method (Field Service work tickets) may now be shipped.

#### Retention Amounts for Work Ticket Invoices

- Retention amount tracking is now available for work ticket invoices without having to install and activate the Job Cost module.
- Accounts Receivable Options have been enhanced with a *Track Job Cost or JobOps Retention Receivables* parameter. With this option selected, along with the *Track Retention* parameter in JobOps Options, a retention amount may be specified for an invoice with work tickets.



[www.jobops.com](http://www.jobops.com)

**JobOps**, a division of Synergistic Software Solutions, LLC  
Two Meridian Crossings, Suite 310, Minneapolis, MN 55423  
800.815.8483 or 612.367.7300



© Copyright 2006. All rights reserved. JobOps is a trademark of BDO Seidman, LLP, and is published by Synergistic Software Solutions, LLC, a wholly-owned subsidiary of BDO Seidman, LLP. Sage Software, the Sage Software logos, and the Sage Software product and service names mentioned herein are registered trademarks or trademarks of Sage Software, Inc., or its affiliated entities. All other trademarks are the property of their respective owners. The contents herein are summary in nature and subject to change without notification from Synergistic Software Solutions, LLC. Synergistic Software Solutions, LLC accepts no responsibility for inadvertent errors or omissions. Part # 2007-01