

## JobOps Enhanced Scheduling

### Streamlined scheduling

The JobOps Enhanced Scheduling Module lets you streamline your scheduling and resource utilization processes.

### Material Availability

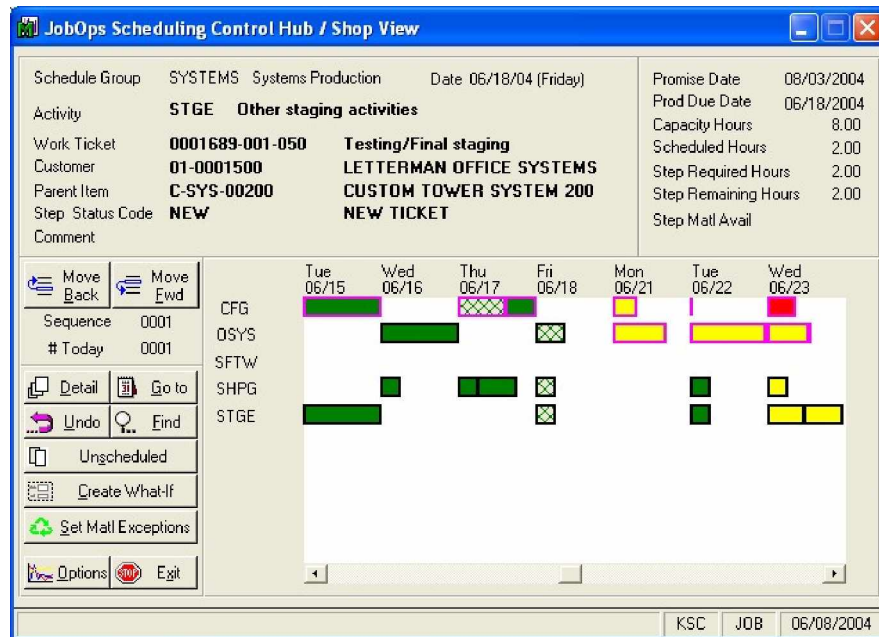
When material shortages can greatly hinder on-time delivery, JobOps Enhanced Scheduling highlights these concerns by letting you drill down and see where inventory can be borrowed from a job that can be completed later.

### Exception Alerts

The graphical display scheduling board displays job status so you can proactively respond to any job-related situation.

### Capable to Promise

Enhanced Scheduling can help calculate a realistic "capable to promise" date based on current load, your finite and infinite rules and the availability of materials.



The JobOps Enhanced Scheduling Module lets you manage by exception. Using the "What If" mode, you can see how tasks can be reassigned by dragging 'n dropping the task to a new date or resource. When you have verified that correcting one problem did not create a new one, the proposed changes can be committed and released to your work force. Exception alerts are displayed by various color to bring your attention to critical jobs.

The JobOps Enhanced Scheduler is an optional module for the JobOps Management System giving users additional flexibility in focusing on scheduling and resource utilization. Now with the Enhanced Scheduling Option, you can take a unique approach in loading your new jobs into the schedule. At the heart of the Scheduling module is a **powerful scheduling engine** that works to establish the priority that jobs should be scheduled. It can reverse schedule jobs from the requested completion date. However, if reverse scheduling determines that the job should have been started before the current day, it automatically handles it by scheduling it when the job can be done.

JobOps understands the complexities of job scheduling and lets you have the best of both worlds. It works by scheduling resources infinitely that can work overtime or have the work reassigned to another resource and finitely schedule those resources that eliminate bottlenecks.

Take advantage of the Enhanced Scheduling module and improve your scheduling, on-time delivery and profitability. You'll quickly see the return on your investment in JobOps and your Sage MAS 90 and 200 systems.

JobOps is a suite of Job Management modules for Sage MAS 90 and Sage MAS 200 ERP. JobOps is suited for small and mid-sized companies (\$7-50 million), in the manufacturing, installation and service/field repair areas.

# Enhanced Scheduling

## FEATURES

*The key to your on-time delivery and performance is the JobOps Enhanced Scheduling Optional Module. If your business operates in a make-to-order environment, the challenge of managing time-sensitive schedules is critical.*

- **Advanced Scheduling Engine**
- **Graphical Scheduling Board**
- **Visual Scheduling Alerts**
- **Work Center Calendars**
- **What If? Mode**
- **Drag 'n Drop Tools**
- **Finite and Infinite Scheduling**
- **Material Constraints**

Analyzes job priority, due dates and resource availability to determine how to load new jobs into your schedule.

Jobs are displayed graphically in a Gantt Chart form. Clicking on any task provides full drill-down details of the job.

Colors show on-time status and alert you of any resources that are over capacity or material shortages that are required for the job.

Capacity of your resources is entered in work center calendars that can be adjusted on the fly if overtime is necessary to meet critical ship dates.

Proposed changes can be made to view the impact they will have on the rest of the schedule before making final commitment to the change.

With one mouse click, job assignments can be changed by switching resources or changing the scheduled work dates on a single task or the entire job.

The Enhanced Scheduling Engine is uniquely able to use infinite scheduling when on-time delivery is critical and finite scheduling when bottlenecks cannot be resolved.

Material shortages can greatly hinder on-time delivery. JobOps Enhanced Scheduling highlights material constraints and allows drill-downs to see if the materials that are not available in inventory can be borrowed from a job that can be completed later.



[www.jobops.com](http://www.jobops.com)

**JobOps**, a division of Synergistic Software Solutions, LLC  
Two Meridian Crossings, Suite 310, Minneapolis, MN 55423  
800.815.8483 or 612.367.7300



© Copyright 2006. All rights reserved. JobOps is a trademark of BDO Seidman, LLP, and is published by Synergistic Software Solutions, LLC, a wholly-owned subsidiary of BDO Seidman, LLP. Sage Software, the Sage Software logos, and the Sage Software product and service names mentioned herein are registered trademarks or trademarks of Sage Software, Inc., or its affiliated entities. All other trademarks are the property of their respective owners. The contents herein are summary in nature and subject to change without notification from Synergistic Software Solutions, LLC. Synergistic Software Solutions, LLC accepts no responsibility for inadvertent errors or omissions.